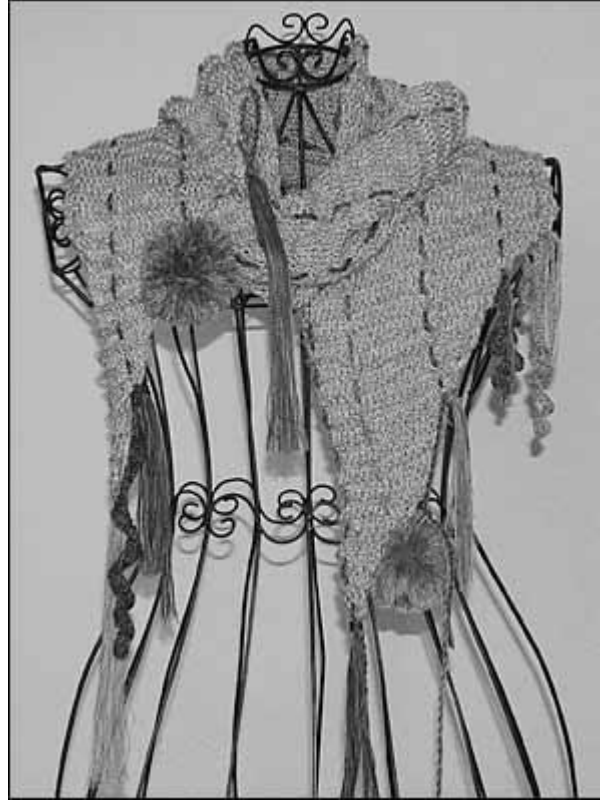


Scarf Miss Crazy

The scarf is worked with a needle in size 5.0 mm (UK size 6, US size 8).



Scheme & beginning:

This scarf is knitted from one corner to the other.



This pattern consists of 3 parts: corner (1) – middle (2) – corner (3).
The arrow shows the direction of work.

Miss Crazy 1

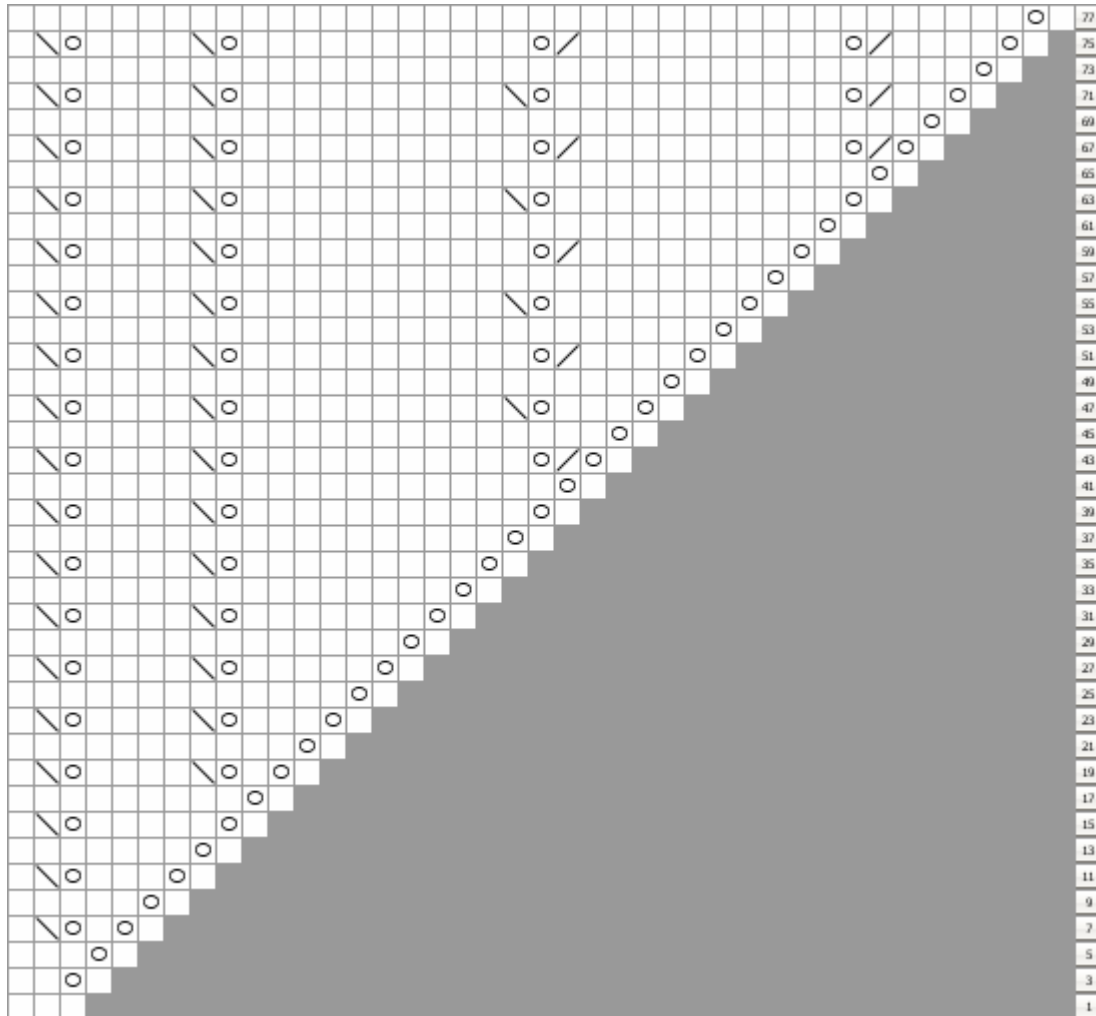
corner (1):



Cast on 3 stitches.

The next row (wrong side row) is purled.

The wrong side rows 2, 6, 10, 14, 18, 22, ... are purled.

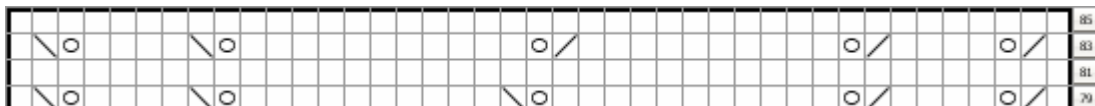
The wrong side rows 4, 8, 12, 16, 20, 24, ... are knitted.



-  no stitch (placeholder)
-  knit  yarn over
-  knit 2 stitches together
-  sl1 k1 pss0 = slip 1 stitch, knit 1 stitch, pass slipped stitch over the knit one

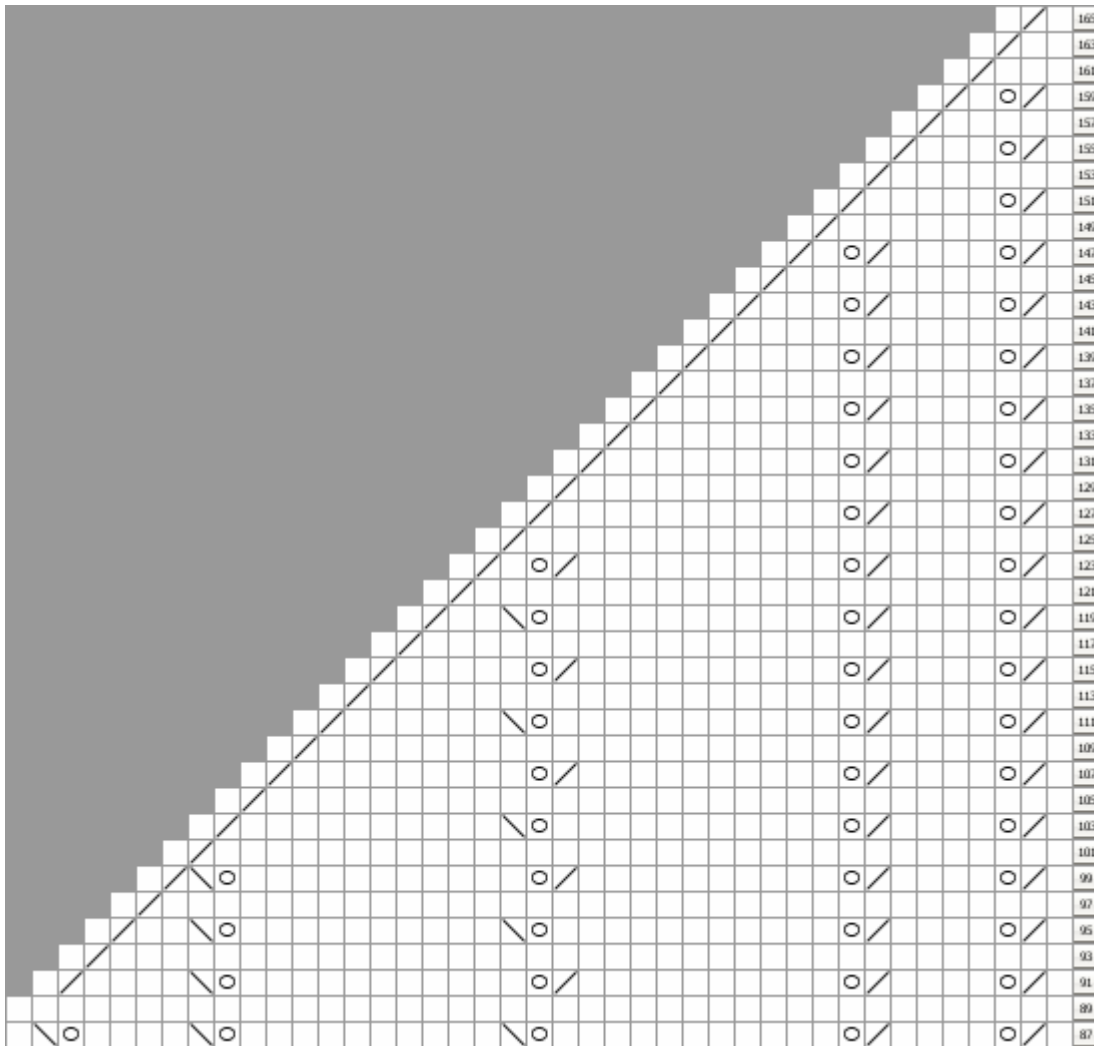
middle (2):

Repeat rows 79 to 86 until your desired length (minus the second corner).



Miss Crazy 2

corner (3):



Bind off the last 3 stitches.

Elaboration:

Weave a cord of chain stitches and/or threads in variant colours into the peekaboo rows.

Fix fringes at the ends.

If you want it a bit more funky, fix fringes, tassels, corkscrew curls and pompoms in variant colours at the ends. Then *Miss Crazy* is perfect.

Have much fun with your needlework!

This instruction is only for your personal use.

Miss Crazy 3