

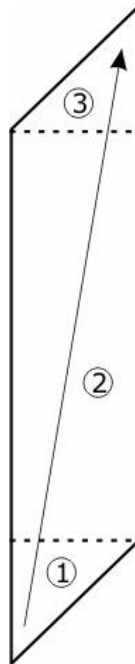
Wabenschal

This scarf is knitted with size 5.0 to 6.0 (UK size 6 to 4, US size 8 to 10) needles.



Scheme & beginning:

This scarf is knitted from one corner to the other.



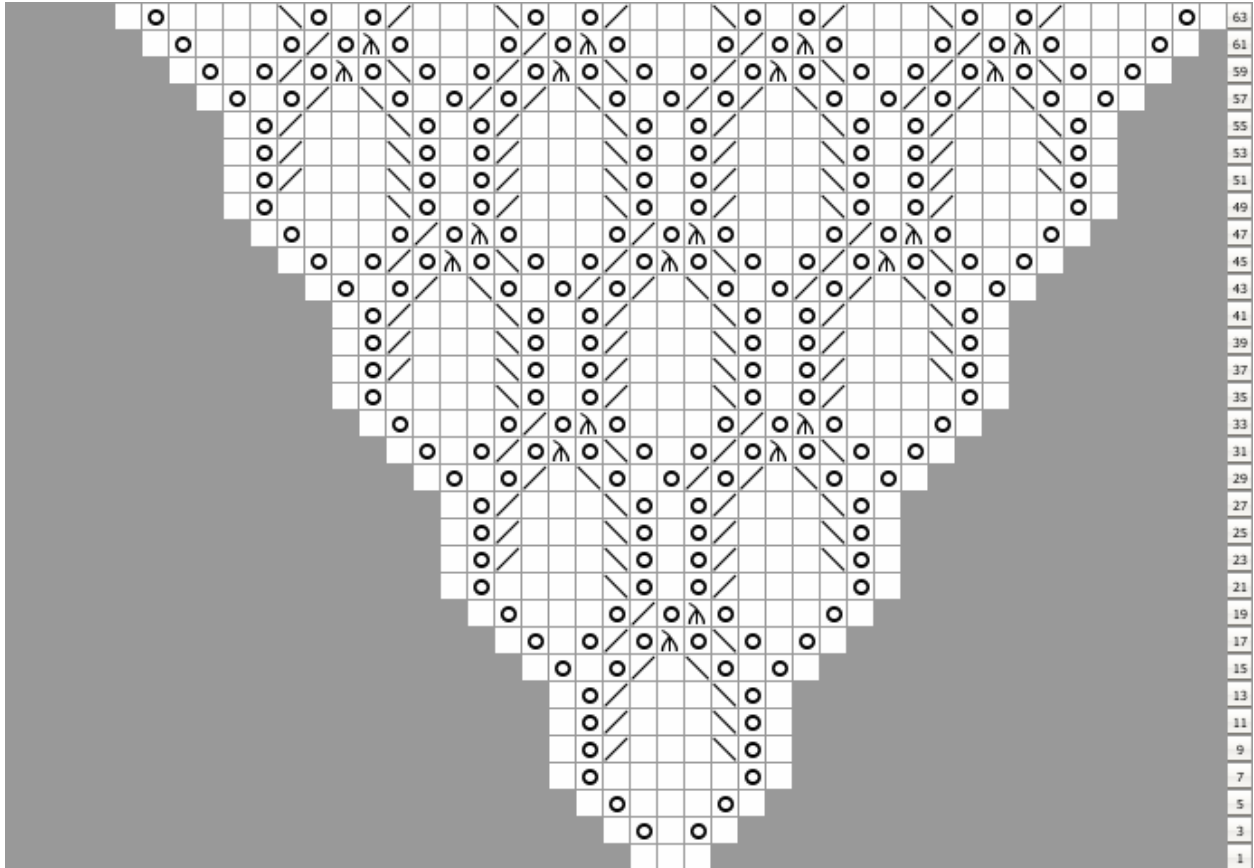
This pattern consists of 3 parts: corner (1) – middle (2) – corner (3).







The arrow shows the direction of work.

Wabenschal 1

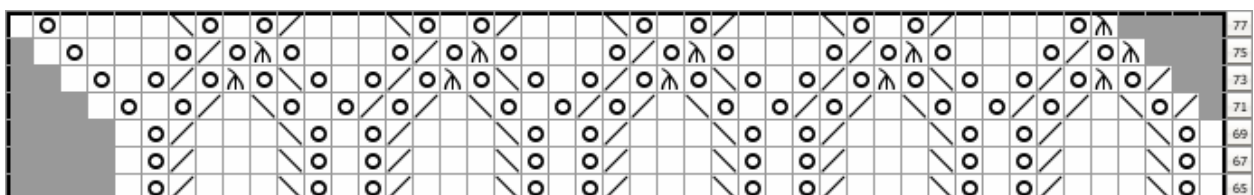
corner (1):

Cast on 3 stitches.
The next and all further wrong side rows are purled.



-  no stitch (placeholder)
-  knit
-  yarn over
-  k2tog = knit 2 stitches together
-  skp = slip 1, knit 1, pass slipped stitch over the knit one
-  k3tog = slip 1, knit 2 together, pass slipped stitch over k2tog

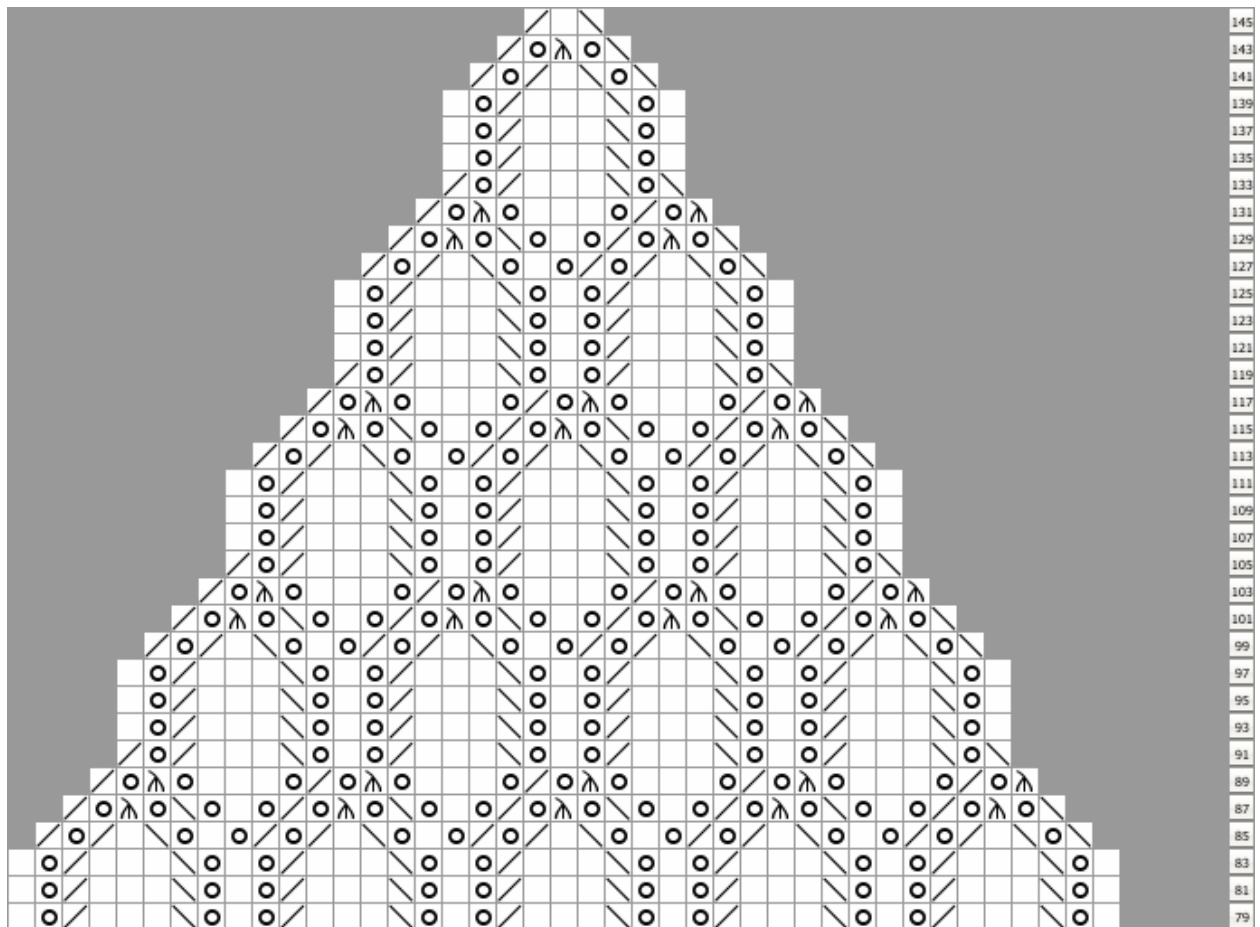
middle (2):



Repeat rows 65 to 78 until your desired length (minus the second corner).

webenschal 2

corner (3):



Bind off the last 3 stitches.

Elaboration:

After sewn up the threads put the scarf into lukewarm water, wring him out and block him. While blocking the honeycombs gets accentuated.

Have much fun with your needlework!

This instruction is only for your personal use.

Wabenschal 3