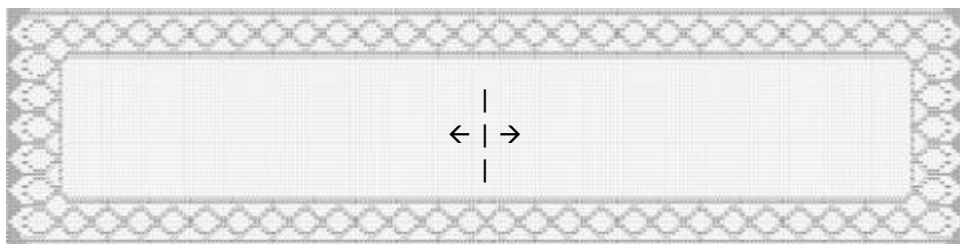


scharf zickezacke

This scarf is knitted with a circular needle size 5.0 mm (UK size 6, US size 8) – preferably 80 cm (31.5 inch) long.



Scheme:



The scarf is knitted in one piece from the middle.
The arrows in the layout show the direction of work.
It will be worked with a provisional cast on.

Part 1:

Crochet a cord of chain stitches with at least 61 stitches in a contrasting colour.
With your knitting needle pick up one stitch of each loop from the chain stitches until you have 61 stitches on your needle.

The next and all further wrong side rows are purled.
Then work after the charts:

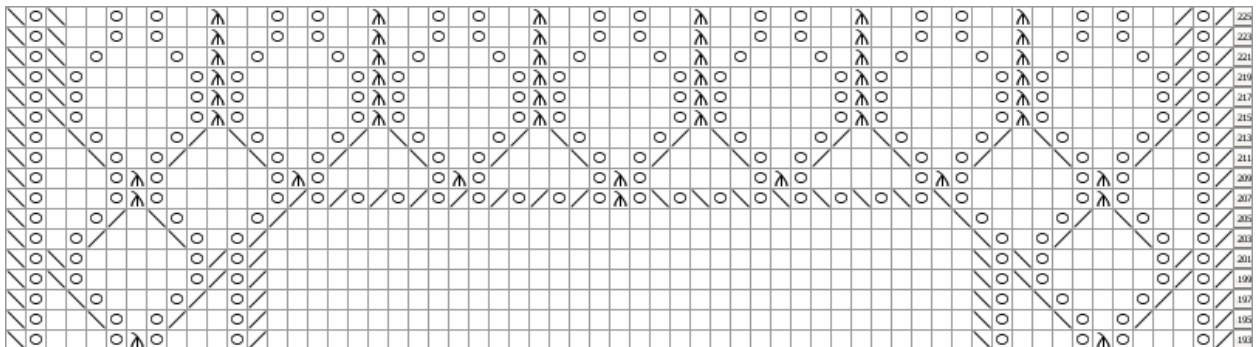


Rows 1 to 16 are worked 12 times.

- knit o yarn over
- / k2tog = knit 2 stitches together
- \ sl 1 k1 pss0 = slip 1 stitch, knit 1 stitch, pass slipped stitch over the knit one
- ^ sl 1 k2tog pss0 = slip 1 stitch, knit 2 stitches together, pass slipped stitch over k2tog

Lace:

From row 193 on work after the following chart:



Then make a loosely bind off or crochet bind off.

Part 2:

Pick up the stitches (strands) from the cast on row.

Work with the basic pattern starting at row 1.

Attention: Here is one strand (=stitch) less! This will be balanced at the end of the row:

Don't knit the second last and the last stitch together.

Then work exactly the same as described in part 1.

The crocheted cord can be removed later.

Elaboration:

Make one row of single crochet stitches at the sides of the scarf.

After sewn up the threads put the scarf into lukewarm water, wring it out and block it.

Have much fun with your needlework!

This instruction is only for your personal use.

scarf zirkeZacke 2