

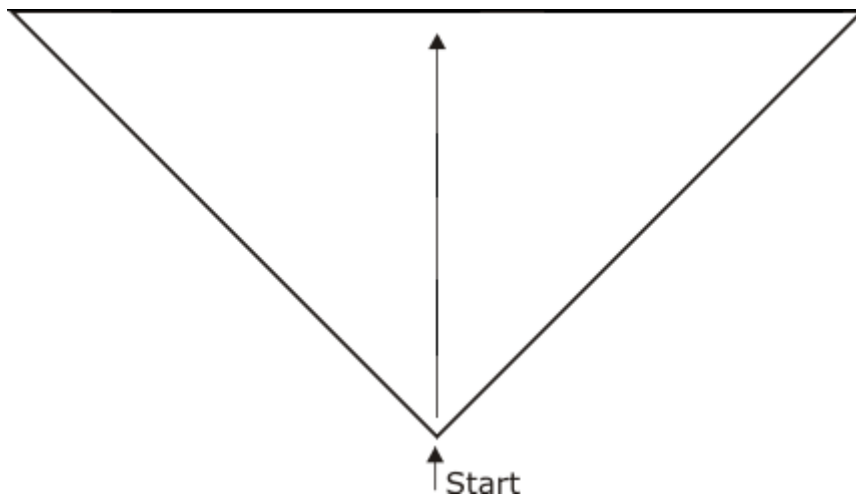
## \*The Nature shawl\*

This shawl is knitted with a circular needle size 5.0 to 6.0 (UK size 6 to 4, US size 8 to 10), length at least 80 cm (31.5 inch).



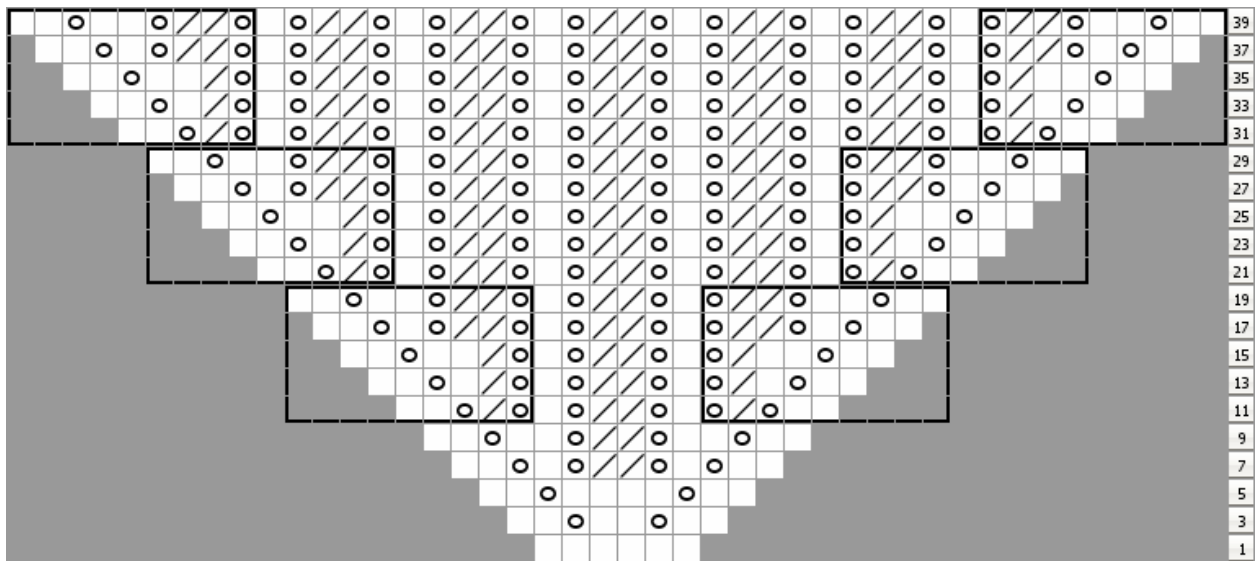
### Scheme & Cast on:

This shawl is knitted upwards (from the bottom point) in the direction of the arrows enabling you to work to any size.







Cast on 6 stitches, all wrong side rows are knitted.  
Then follow the chart, only shown are the right side rows.

Pattern:



The thick hemmed areas are the repeats for left and right sides.

-  no stitch
-  knit
-  yarn over
-  k2tog = knit two stitches together as one stitch

By arriving at your desired size knit 2 rows after the last pattern repeat,  
then make a loosely bind off.  
If you like pull in fringes.

*Have much fun with your needlework!*

This instruction is only for your personal use.

*Tusch Nature 2*