

Wrist warmer * Maria *

The wrist warmers are knitted in the round with needle size US 6/7, 4.0 – 4.5mm.
The wrist warmers are reversed image.



Cast on & Pattern:

Loosely cast on 33 stitches.

Follow the chart on the next page.
Knit all even rows.

thumb:

Start with the gusset in round 35.

Please note that the stitches 1 – 6 and 40 – 46 are not there yet. They will result by the decreasing turn back loof of the strand in the following rounds.

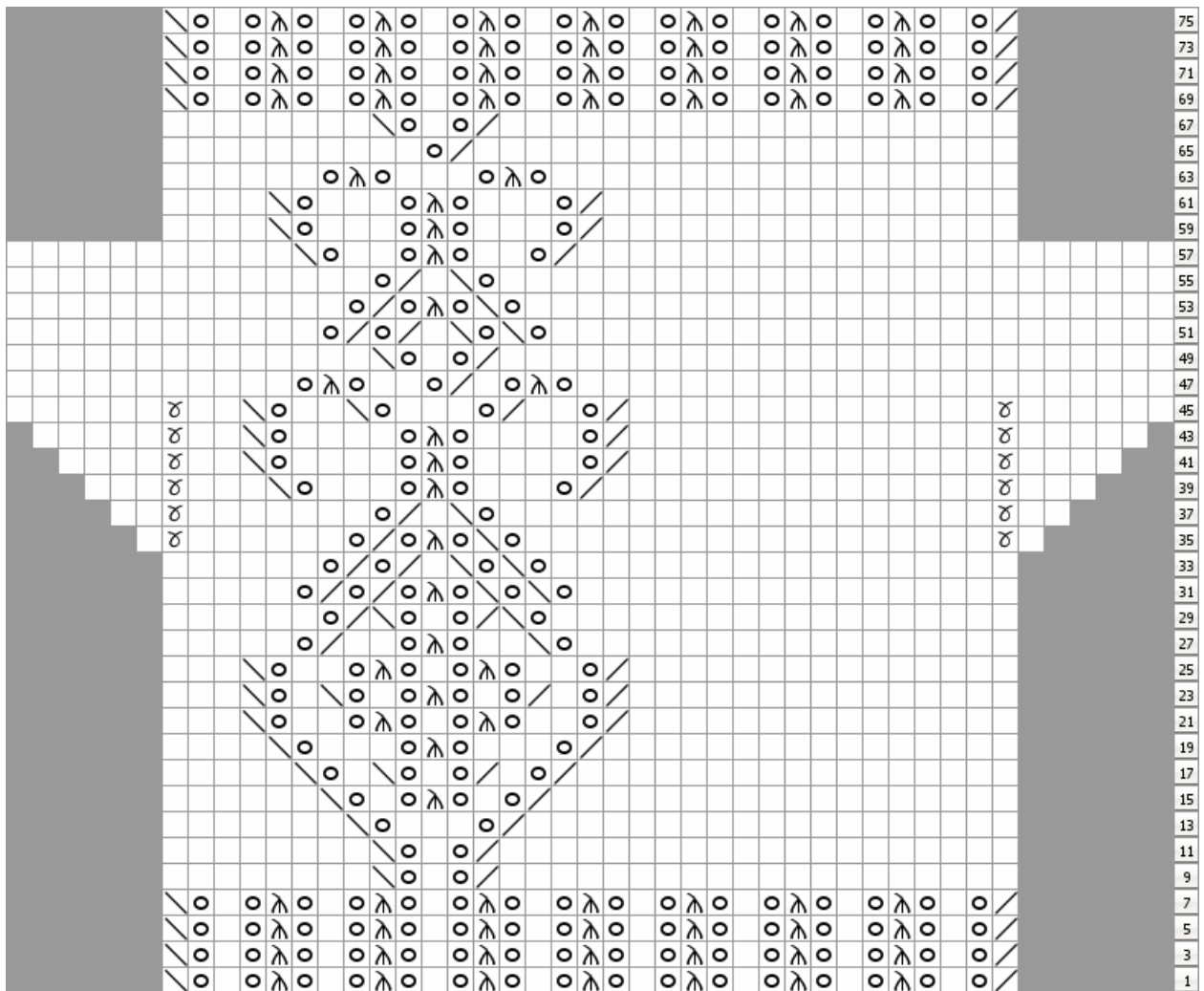
Loosely bind off 12 stitches for the thumb hole in round 58, starting with stitch 40 – begin of the thumb. Then work in rounds with all stitches.








Elaboration:

Loosely bind off in round 76.

For a neat border make one row of single crochet stitches or one row of reversed single crochet stitches.

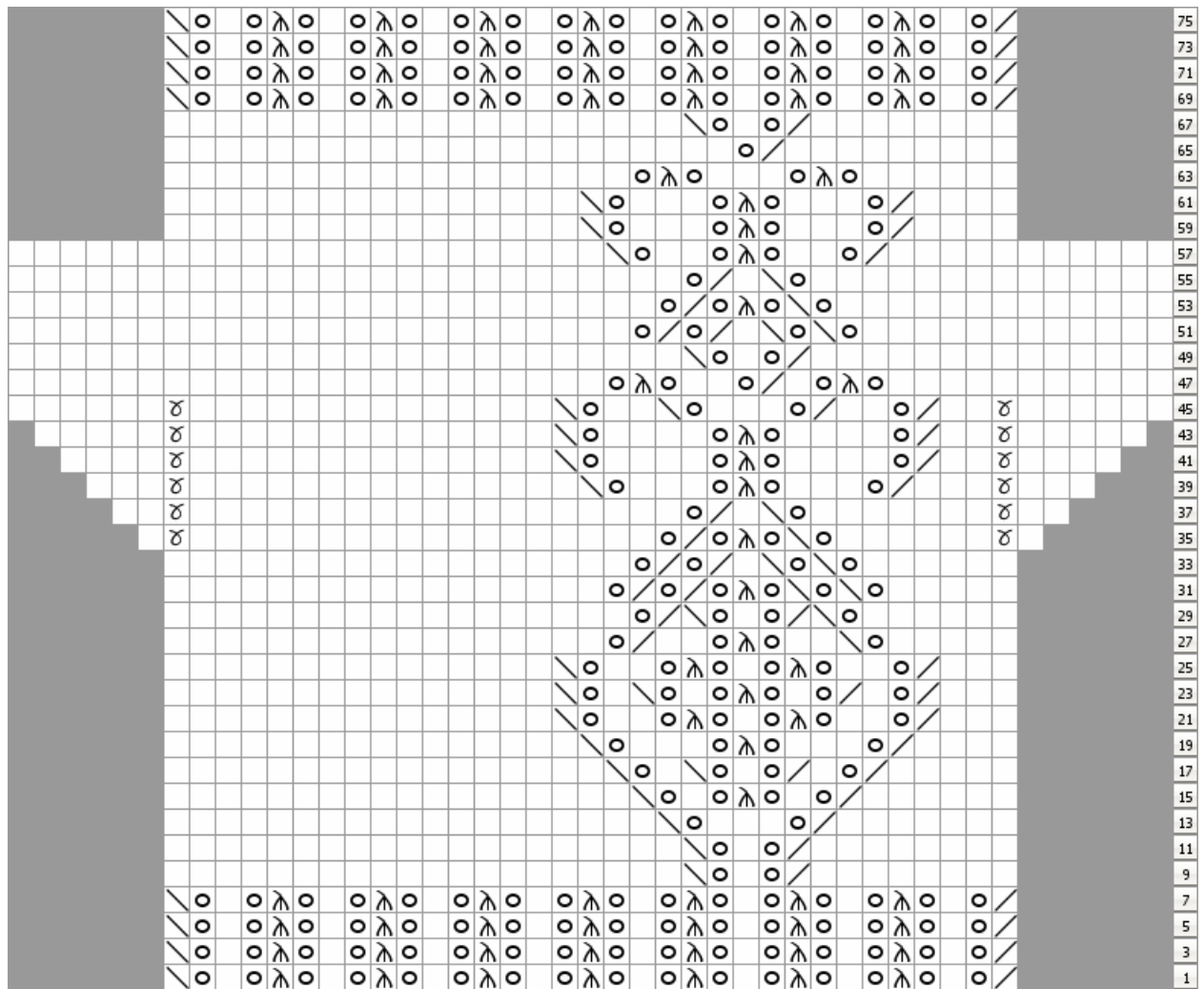
Right hand:




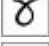





-  no stitch
-  knit
-  yarn over
-  make 1 through back loop of the strand
-  knit 2 together
-  slip one if to knit, knit one, pass the slipped stitch over
-  slip one if to knit, knit 2 together, pass the slipped stitch over

Wrist warmer Maria 2

Left Hand:



-  no stitch
-  knit
-  yarn over
-  make 1 through back loop of the strand
-  knit 2 together
-  slip one if to knit, knit one, pass the slipped stitch over
-  slip one if to knit, knit 2 together, pass the slipped stitch over

Have much fun with your needlework!

This instruction is for personal use only. All rights reserved.

Wrist warmer Maria 3