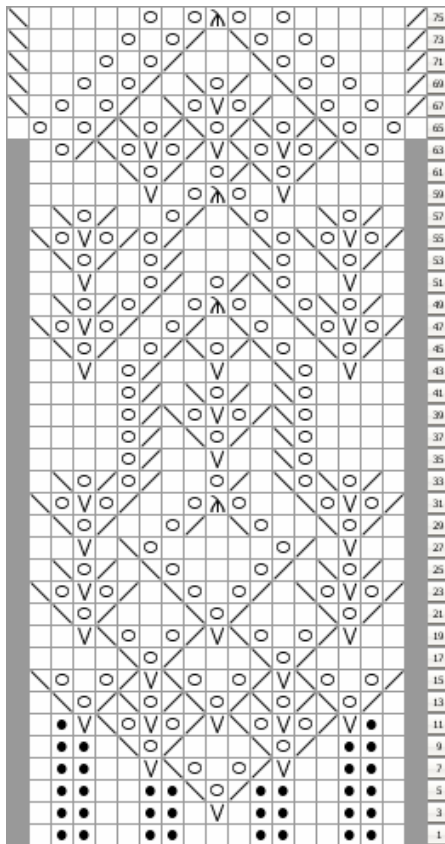
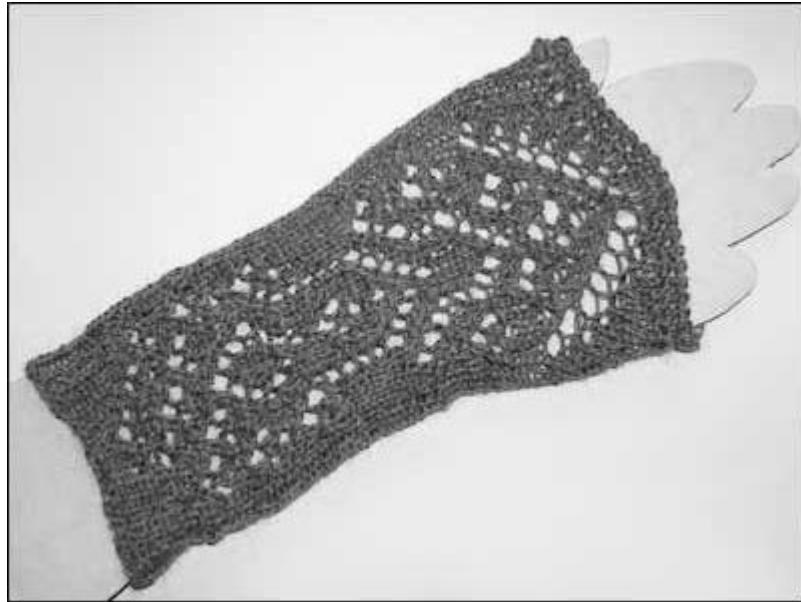


Wrist warmer *Thyra*

The wrist warmer is knitted in the round with needle size US 4/6, 3.5/4.0 mm. The left and the right one are identical.



Cast on & Pattern:

Cast on 41 stitches.

Purl the next row then join to the round.

Follow the chart in rounds.

Divide the stitches 17 / 8 / 8 / 8 on the DPN's.

The needle with the 17 stitches is charted.

There is no special pattern to the other stitches. For the first twelve rounds work: k1, p2, k2, p2, k1. With the beginning of round 13 work these stitches in stockinette stitch.

- no stitch
- knit
- purl
- yarn over
- / knit 2 together
- \ slip one if to knit, knit one, pass the slipped stitch over n
- V make one out of one stitch, knit one and knit turn back loop in one stitch
- ^ slip one if to knit, knit 2 together, pass the slipped stitch over

Elaboration:

Bind off loosely. Make one row of single crochet stitches and one row of reversed single crochet stitches.

Have much fun with your needlework!

This instruction is for personal use only. All rights reserved.